

Remotely Operated Underwater Vehicle (ROV)



100 METERS DIVING DEPTH



EXQUISITE AND USER-FRIENDLY OPERATE



SMART TDS, EASY TO COLLECT THE CABLE



6 THRUSTERS



4K CAMERA & 720P REAL-TIME TRANSMISSION



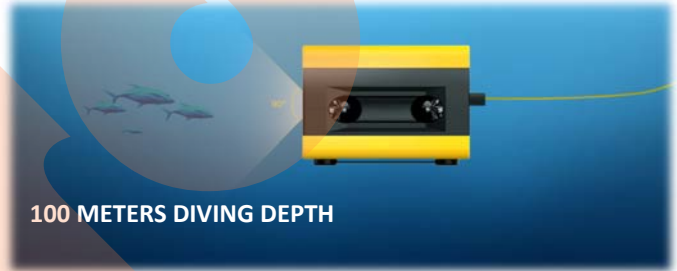
CCROV is equipped with 20 mm low-distortion wide-angle 4K camera with a 12-million-pixel image sensor for taking jpeg photos and 4K ultra-HD video with 30 frames per second. CCROV can provide real-time HD transmission while being operated by remote controller at the water surface by using mobile phone or tablet app available for Android and iOS for exploring underwater world, structures, pipelines and cables, underwater confined spaces and detecting ghost fishing net and inspection of vessel hull, port piles etc.

6 THRUSTERS/ 5 DEGREE FREEDOM



CCROV have 6 thrusters and 5 different degree freedom, could move to different direction freely.

100 METERS DIVING DEPTH



CCROV have IP68 high-level waterproof capability, could dive 120 meter depth.

4K CAMERA & 720P REAL-TIME TRANSMISSION



CCROV could take 4K picture and video by build-in camera and 720P real-time transmission through cable.

SMART TDS, EASY TO COLLECT THE CABLE



CCROV have a special tether deploy system, which help you to collect the cable easily and quickly after work

CCROV is highly maneuverable with its six vector thrusters, achieving fully independent 5 degree of freedom operations. Thruster positions and vehicle dimensions enables the flexible control even in the areas of about 1 m³.

CCROV is housing is made of military grade floating material. It is constructed with high-sealed high grade anti-corrosive aluminum alloy cabin. Device can withstand high pressure and high corrosion from the 100 m deep sea dives and has successfully passed a professional pressure test below 120 m deep pressure.

CCROV has a special tether deployment system and winding handle. The tether deployment system has a 2850 mAh battery and may also be configured with an AC power module which can achieve unlimited battery duration for the customers who have a vessel supply.

Remotely Operated Underwater Vehicle (ROV)

Applications in Various Fields



AQUACULTURE



ENGINEERING
INSPECTIONS



SEARCH & RESCUE



YACHT & VESSEL
INSPECTION



UNDERWATER
PHOTOGRAPHY



DIVING



FISHING



BEACH PORT
INSPECTION



EDUCATION



SAILING

Technical Specifications

Feature Specs

Dimensions	208 (L)×204 (W)×158 (H) mm
Weight in air	5524g
Thruster	Four set horizontally, and two set vertically
Propeller	Immersion-type, with diameter of 34mm
LED	4×350 Lumen
Sensor	Depth, temperature
Main sealed cabin material	Aluminum alloy
Float material	Synthetic composite foam
Time of endurance	2~4 hour
Motion control	5 degrees of freedom
Vertical hovering accuracy	0.2m
Advancing speed	Max. 1.0m/s
Maximum diving depth	100m
Camera	4K/30fps
Operating ambient temperature	0~40°C

Battery and Charger Specs

Capacity	2850mAh
Voltage	54.3V 15S
Battery type	18650 lithium battery pack
Energy	154.76Wh
Operating ambient temperature	-10° C ~ 40° C
Maximum charging power	75W
Battery charger	Input 100-240V; Output 60V

Camera Parameters

Image sensor	Sony IMX 117 1/2.3-inch CMOS; 12 MP
Lens	FOV 90° f/2.8, infinity focus
Maximum image resolution	4000×3000
Shooting mode of photos	Single photo shooting/multi-photo shooting/fixed-time shooting
Video resolution	4K: 3840×2160 (4K) 30fps FHD: 1920×1080P 120fps/60fps HD: 1280×720P 240fps/120fps
Maximum bit stream of video storage	60 Mbps
Image format	JPEG
Video format	MP4 (H.264/H.265)
Memory card type	64 GB Micro SD card (Class 10)
Operating ambient temperature	0° C ~ 40° C

Remote Control Specs

Operation frequency	2.400GHz~2.483Ghz
Max. effective signal range	FCC CE 100M (without interface or shield)
Operating ambient temperature	0~40°C
Battery	4 batteries (AA)
Transmitting power (EIRP)	FCC: below 20 dBm

Tether Deploy System (TDS) Specs

Dimensions	238×310×293 mm
Weight in air	3.5kg (25m cable), 7.5kg (95m cable)
Cable diameter	8mm
Optional accessory	AC power module
AC Power Module	Input 100-240 VAC; Output 54V