

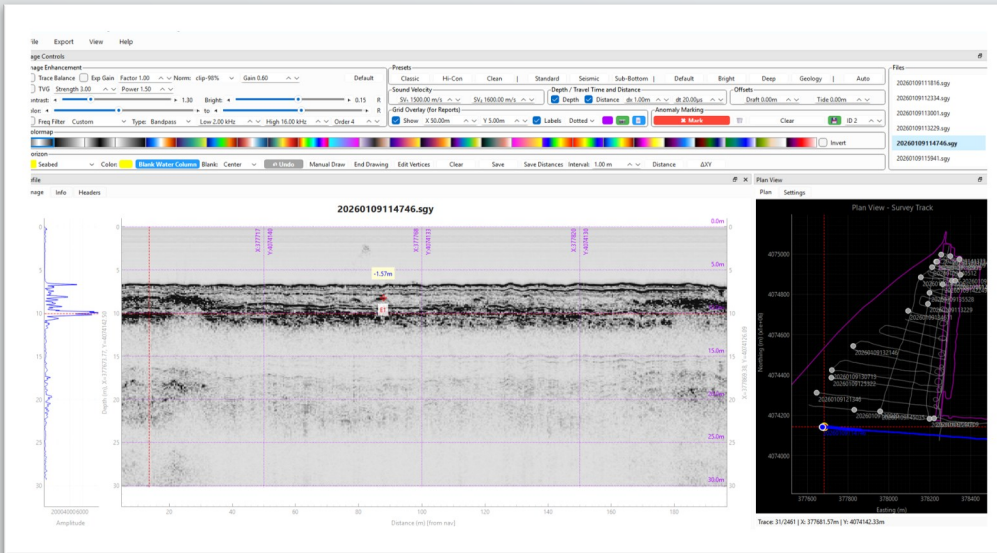
# Kordil Subbottom Processing Software

## Advanced Processing, Interpretation, and Data Visualization



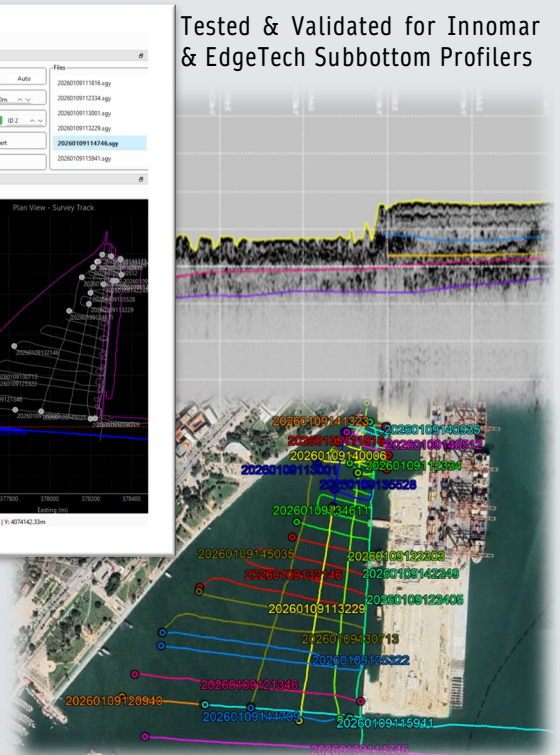
Kordil Subbottom Processing Software is a professional-grade application designed for processing, visualizing, and interpreting sub-bottom profiler (SBP) data acquired during marine and nearshore geophysical surveys.

The software supports industry-standard SBP data formats and provides advanced signal processing and interpretation tools to enhance stratigraphic analysis, object detection, and accurate seabed and sub-surface characterization. It is designed to meet the practical requirements of engineering, UXO, and geophysical survey projects.



Tested & Validated for Innomar & EdgeTech Subbottom Profilers

Kordil Subbottom Processing Software provides a user-friendly interface and professional tools for processing sub-bottom profiler data, allowing efficient analysis and production of clear, report-ready outputs.



### ADVANTAGES

- Fast processing of large SBP datasets
- Developed from real-world project experience
- Engineering-focused tools built around real survey workflows
- Seabed and sub-surface horizon picking
- Adjustable gain and filtering tools for enhanced signal clarity
- Multi-layer interpretation for geology, objects & anomalies
- Synchronized dual-view display combining high-resolution sub-bottom profiles with plan-view navigation
- Report-ready outputs with automatic segmented and strip profile exports, plus point lists for digitized layers and target markings

### PROCESSING FEATURES

- Band-pass & adaptive filtering
- Gain control (TVG / AGC)
- Noise reduction & trace editing
- Bottom tracking & seabed picking
- Layer / horizon digitization
- Annotation & interpretation layers
- Tide & Draft offsets corrections
- Supported Formats: \*.SEG, \*.SEGY, \*.SGY, \*.DXF
- Export Formats: \*.XYZ, \*.CSV, \*.KMZ, \*.PNG, \*.JPG, \*.DXF

### TYPICAL APPLICATIONS

- Geophysical surveys
- Offshore and nearshore engineering
- Pipeline and cable route surveys
- UXO and geohazard surveys
- Port and harbor developments
- Dredging and reclamation projects